

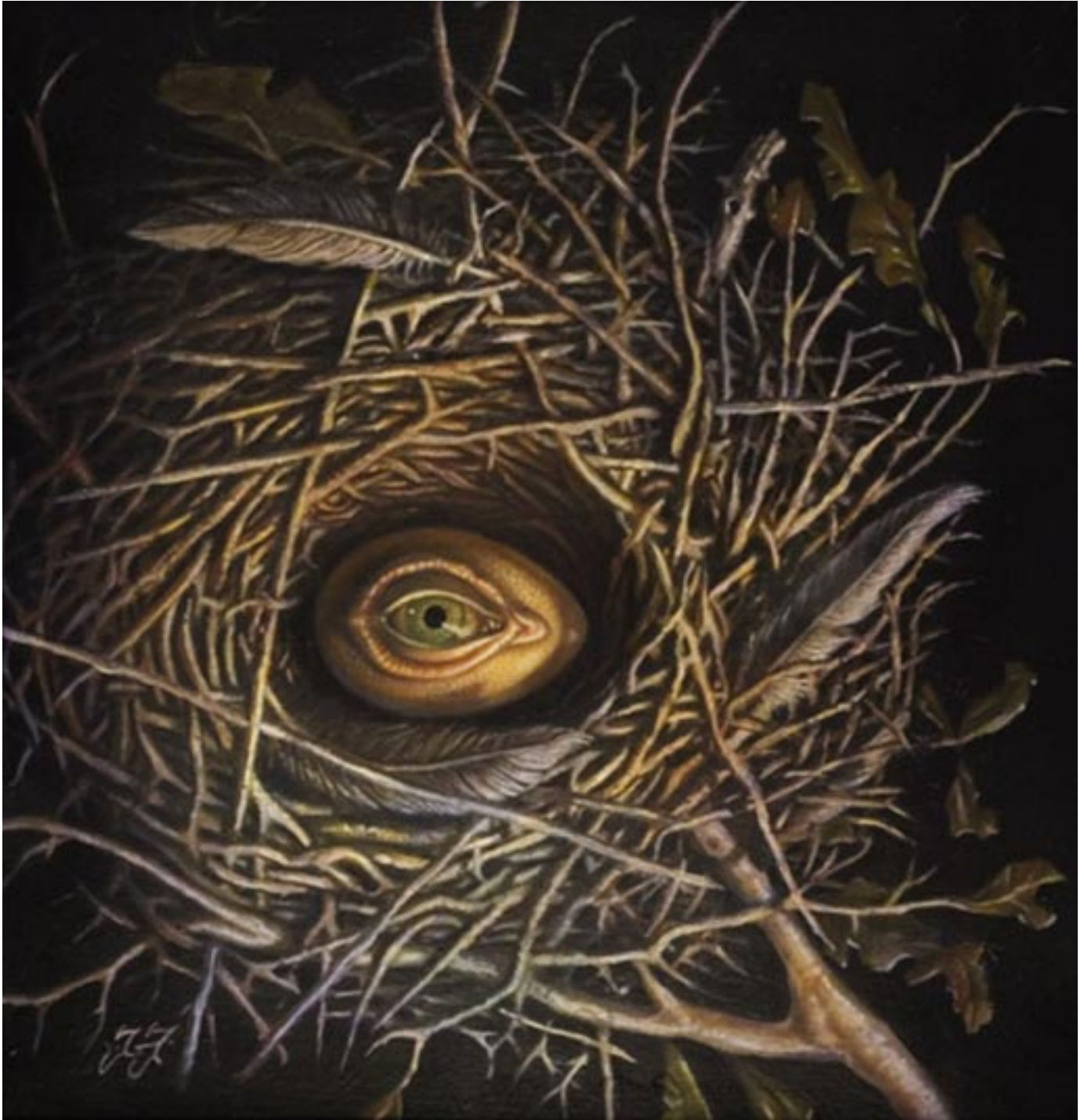


Go Devil Oil on panel 36" round

Timothy P French

TPF0911@ecu.edu

www.kitsch22art.com



Awaken Oil on panel 12" x 12"

The term *Go Devil* is an oil drilling term. It is a controlled explosive device designed to clear blocked pipes. It clears the way of obstructions, allowing the oil to flow freely. In railroad terms it is a rail car designed to carry two men up the tracks ahead of the train to clear any possible obstructions.

I have in my past found my life obstructed by poor judgment, addictions and unhealthy alliances. These obstructions were mostly of my own design. I had reached a place where I had become my own enemy. I could not move. In fact, that was how I felt about my entire life. My life was a prison. I was a prisoner and the Jailer; however,

I had the keys to my own freedom. This realization did not come quickly or easily. I spent too many years with no self respect, but completely self centered. The people I chose to yoke myself with were equally self-loathing and selfish. This life style left me physically exhausted, mentally crippled, and spiritually dead, yet it continued on for years. Then came that great day fourteen years ago that changed my life and would later directly influence the creation of the painting I titled *Go Devil*. That great day I experienced was a moment of absolute clarity. The obstacles were gone. It was a miracle, an answered prayer, an apocalypse that after fourteen years



Title etc here.....

Obey! Oil on panel 5" x 8"

Paradime Shift Oil on panel 5" x 8"





Title etc here.....

is still unfolding and revealing an image of what I was, and what I am becoming. It is my opinion that through self actualization one can easily realize the collective human condition.

In my work *Go Devil* the device that clears the way is a male figure, part human with a serpentine tail in place of legs. I envision the figure as dwelling in the sky. He destroys in order to make room for a personal shift in perspective. The *Go Devil* is not necessarily evil or wrong, even though he carries a spirit of death in a cage on his head. The *Go Devil* casts no judgment, but serves the will of what I believe to be the truth. I think of the painting as a confession, and the beginning of a healing process.

While painting *Go Devil* I came to believe some struggles are vital for the integration of the perceived

perils of man in his environment. It is important to me as an artist to find and understand the source of my suffering in order to obtain wisdom and personal insight. Often I discover in hind sight that my suffering is necessary to perpetuate the arrival of a personal revelation. In my work I seek the truth. It is written in the Aztec Codex that there is a self within ourselves that we must sacrifice, and our own hearts must be torn out of the false being and offered to the light (Daniel Pinchbeck, 2012: *The Return of Quetzalcoatl*). *Go Devil* represents a clearing of the way: the death of the false self, and an offering to the light of hope.

Timothy P French